

# PRODUCT INFORMATION PACKET

Model No: 048T34D11001

Catalog No: K113A

0.33 HP General Purpose Motor, 3 phase, 3600 RPM, 230/460 V, 48 Frame, ODP  
Three Phase ODP Motors



Regal and Marathon are trademarks of Regal Beloit Corporation or one of its affiliated companies.

©2020 Regal Beloit Corporation, All Rights Reserved. MC017097E

REGAL



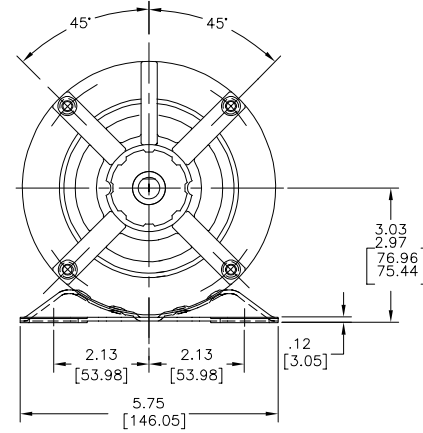
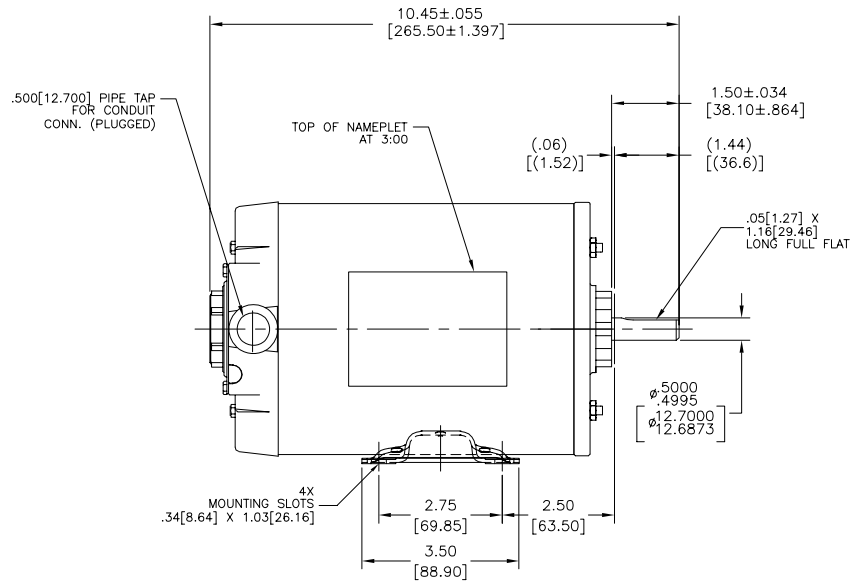
**Nameplate Specifications**


Output HP	0.33 Hp	Output KW	0.25 kW
Frequency	60 Hz	Voltage	230/460 V
Current	1.4/0.70 A	Speed	3450 rpm
Service Factor	1.35	Phase	3
Efficiency	69.5 %	Power Factor	73.6
Duty	Continuous	Insulation Class	B
Design Code	NO DESIGN CODE	KVA Code	S
Frame	48	Enclosure	Drip Proof
Thermal Protection	No	Ambient Temperature	40 °C
Drive End Bearing Size	6203	Opp Drive End Bearing Size	6203
UL	Recognized	CSA	Y
CE	Y	IP Code	22

**Technical Specifications**

Electrical Type	Squirrel Cage Induction Run	Starting Method	Across The Line
Poles	2	Rotation	Reversible
Mounting	Rigid Base	Motor Orientation	Horizontal
Drive End Bearing	Ball	Opp Drive End Bearing	Ball
Frame Material	Rolled Steel	Shaft Type	NEMA 48
Overall Length	10.45 in	Frame Length	8.25 in
Shaft Diameter	0.500 in	Shaft Extension	1.5 in
Assembly/Box Mounting	F1 OUT ODE BRKT RADIAL		
Outline Drawing	048T34D11001-S01	Connection Drawing	D0000283-001

This is an uncontrolled document once printed or downloaded and is subject to change without notice. Date Created:14/12/2020



DRAWING REVISION A	REVISION BY J.ZHU	DATE 04-21-2015	TOLERANCES UNLESS OTHERWISE SPECIFIED DCC INCH mm ANGLE X ±0.1 (±2.5) ±0.5° XX ±0.02 (±0.51) XXX ±0.005 (±0.127) XXXX ±0.0005 (±0.0127)	DRAWN BY: J.ZHU	 Regal Beloit America, Inc.
ECC-0076225	APPROVED BY J.ZHU	DATE 04-21-2015	REMOVE BURRS & BREAK SHARP EDGES .003(.015) (.076(.381)) CORNER FILLETS .02 (.51) MACHINED SURFACES .15/32	DATE: 04-21-2015	
ECC DESCRIPTION NEW MODEL RELEASE			REFERENCE	APPROVED BY: J.ZHU	DESCRIPTION MODEL-CFHP-48FR OUTLINE
<small>                 COPYRIGHT REGAL BELOIT AMERICA, INC. ALL RIGHTS RESERVED.                  PROPRIETARY AND CONFIDENTIAL INFORMATION - THIS DOCUMENT IS THE PROPERTY OF REGAL BELOIT AMERICA, INC. IT IS NOT TO BE REPRODUCED OR TRANSMITTED IN ANY FORM OR BY ANY MEANS, ELECTRONIC OR MECHANICAL, INCLUDING PHOTOCOPYING, RECORDING, OR BY ANY INFORMATION STORAGE AND RETRIEVAL SYSTEM, WITHOUT THE WRITTEN PERMISSION OF REGAL BELOIT AMERICA, INC. ANY UNAUTHORIZED REPRODUCTION OR USE OF THIS DOCUMENT SHALL BE RETURNED TO OWNER UPON REQUEST. IT MAY BE SUBJECT TO PATENT PROTECTION. RESPECTIVE TRADE APPLICABLE EXPORT CONTROL LAWS AND REGULATIONS.             </small>			MATERIAL	DATE: 04-21-2015	PROCESS/FINISH
			THIRD ANGLE PROJECTION	SIZE (DWG NO)	048T34D11001
					SHEET 1

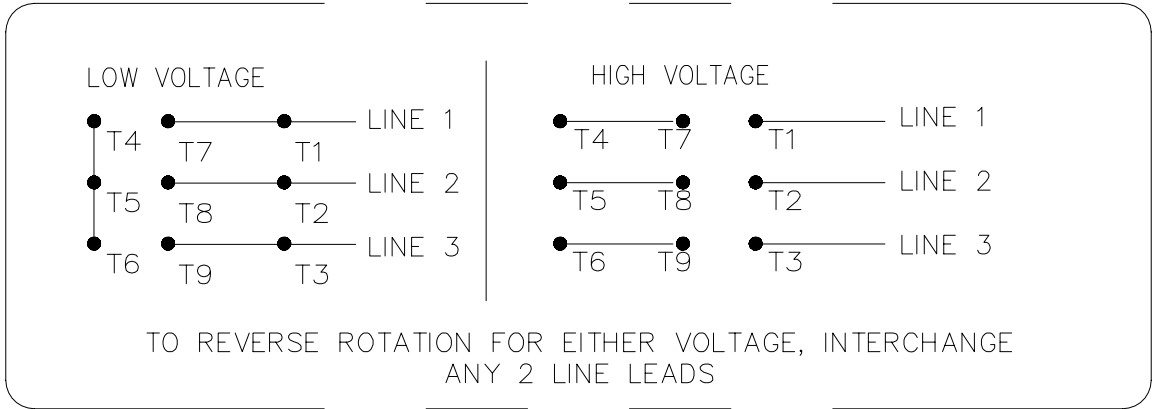
4

3

2

1

REV	ECO	REV BY	DATE	APPD	DATE
A	0016784	R.RASCON	10-12-2010	D.JUAREZ	10-12-2010



- NOTES:
1. DATTED BOX REPRESENTS TOTAL PRINTED AREA ALLOWED FOR CONNECTION DIAGRAM TO FIT IN (.75[19.1] X 2.13[54.1]) SEE NAMEPLATE DRAWING 170500 OR 170501 FOR LOCATION.
  2. CHARACTERS ARE TO BE A MINIMUM OF .03[.8] TO .06[1.5] MAXIMUM IN HEIGHT.
  3. DETAILS ARE NOT TO BE COPIED FROM DRAWING, BUT ARE TO BE REPRODUCED FROM ORIGINAL ARTWORK FURNISHED.

GEOMETRIC CHARACTERISTICS & SYMBOLS

- ▭ FLATNESS
- STRAIGHTNESS
- ∠ ANGULARITY
- ⊥ PERPENDICULARITY (SQUARENESS)
- // PARALLELISM
- ROUNDNESS (CIRCULARITY)
- ⊘ CYLINDRICITY
- △ PROFILE OF ANY SURFACE
- ⌒ PROFILE OF ANY LINE
- ↗ RUNOUT
- ⊕ TRUE POSITION
- ◎ CONCENTRICITY
- ≡ SYMMETRY

UNLESS OTHERWISE SPECIFIED  
 DIM. TOLERANCES ARE AS FOLLOWS:  
 INCH X XX XXX XXXX  
 ±.1 ±.02 ±.005 ±.0005  
 mm ±0.5 ±0.13 ±0.013  
 ANG. ±.50 DEG  
 REMOVE BURRS & BREAK SHARP EDGES:  
 INCH .003-.015 mm 0.1-0.4  
 CORNER FILLETS TO:  
 INCH .020 mm 0.5  
 MACHINE SURFACES:  
 INCH 125 mm 3.2  
 METRIC DIMS. SHOWN IN [BRACKETS]

DR BY:	R.RASCON	10-12-2010
APPD:	D.JUAREZ	10-12-2010
THIRD ANGLE PROJECTION		EDS DATE 02-22-2008 FORMAT REV F
CONFIDENTIAL: THIS DRAWING AND ITS INFORMATION ARE THE EXCLUSIVE AND CONFIDENTIAL PROPERTY OF A.O. SMITH CORP. AND ARE NOT TO BE DISCLOSED, DUPLICATED, DISTRIBUTED OR OTHERWISE USED WITHOUT THE WRITTEN CONSENT OF A.O. SMITH CORP. -ALL RIGHTS RESERVED. ASME Y14.5M 1994		

<b>ELECTRICAL PRODUCTS COMPANY</b> <small>A DIVISION OF A. O. SMITH CORPORATION</small>	
DESCRIPTION	
CONN DIAGRAM-NAMEPLATE	
SIZE	DWG NO
B	D0000283-001
SCALE	SHEET
NONE	1

4

3

2

1

4

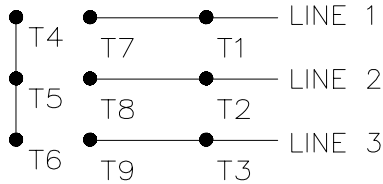
3

2

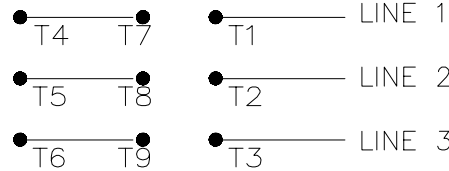
1

REVISION:	ECO	REVISADO POR:	FECHA:	APROBADO POR:	FECHA:
A	0016784	R.RASCON	10-12-2010	D.JUAREZ	10-12-2010

LOW VOLTAGE



HIGH VOLTAGE



TO REVERSE ROTATION FOR EITHER VOLTAGE, INTERCHANGE ANY 2 LINE LEADS

NOTAS:

1. LA CAJA PUNTEADA REPRESENTA EL TOTAL DEL AREA IMPRESA TOTAL PERMITIDA PARA UN DIAGRAMA DE CONEXION PA5A ANCAJAR EN (.75[19.1] X 2.13 [54.1]) VER EL DIBUJO DE LA PLACA DE IDENTIFICACION 170500 O 170501 PARA LOCALIZACION.
2. LOS CARACTERES DEBEN SER DE UN MINIMO DE ALTURA DE .03[.8] A UN MAXIMO DE .06[1.5].
3. LOS DETALLES NO DEBEN SER COPIADOS DEL DIBUJO, SINO DEBEN SER REPRODUCIDOS DE LAS ILUSTRACIONES ORIGINALES EQUIPADAS.

CARACTERISTICAS DE GEOMETRIA Y SIMBOLOS

- ▭ PLANICIDAD
- RECTITUD
- ∠ ANGULARIDAD
- ⊥ PERPENDICULARIDAD (A ESCUADRA)
- // PARALELISMO
- REDONDEZ (CIRCULARIDAD)
- ⊘ CILINDRICIDAD
- ⊖ PERFIL DE CUALQUIER SUPERFICIE
- ⌒ PERFIL DE CUALQUIER LINEA
- ↑ VARIACION
- ⊕ POSICION REAL
- ⊙ CONCENTRICIDAD
- ≡ SIMETRIA

A MENOS QUE SE ESPECIFIQUE DE OTRA MANERA, LAS TOLERANCIAS DE LAS DIMS; SON LAS SIGUIENTES:

	X	XX	XXX	XXXX	
PULG	±.1	±.02	±.005	±.0005	
mm	±0.5	±0.13	±0.013		
ANG.	±.50 GRADOS				
ELIMINAR REBABAS Y ORILLAS FILOSAS DEL BORDE.					
	PULG	.003-.015	mm	0.1-0.4	
	FILETEAR ESQUINA:	PULG	.020	mm	0.5
	MAQUINAR SUPERFICIES	PULG	1/25	mm	3/2

DIMS METRICAS MOSTRADAS [PARENTESIS]

DIBUJADO POR:	R.RASCON	10-12-2010
APROBADO POR:	D.JUAREZ	10-12-2010
TERCER ANGULO DE PROYECCION		FECHA EDS: 02-22-2008 REV. FORMATO: F
CONFIDENCIAL: ESTE DIBUJO Y SU INFORMACION SON PROPIEDAD DE USO EXCLUSIVO Y CONFIDENCIAL DE A.O.SMITH CORP. Y NO DEBERAN SER REVELADOS, DUPLICADOS, DISTRIBUIDOS O USARSE DE OTRA MANERA SIN EL CONSENTIMIENTO ESCRITO DE A.O. SMITH CORP. -TODOS LOS DERECHOS RESERVADOS.ASME Y14.5M 1994		

		<b>ELECTRICAL PRODUCTS COMPANY</b> <small>A DIVISION OF A. O. SMITH CORPORATION</small>	
DESCRIPCION: CONN DIAGRAM-NAMEPLATE			
TAMAÑO: B	NUMERO DE DIBUJO: D0000283-001		
ESCALA: NONE			HOJA: 1

4

3

2

1

4

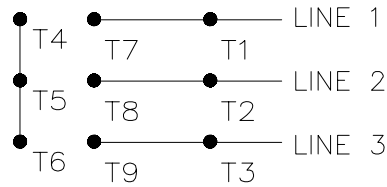
3

2

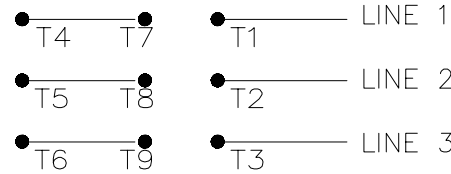
1

版本	ECO	编制	日期	批准	日期
A	0016784	R.RASCON	10-12-2010	D.JUAREZ	10-12-2010

LOW VOLTAGE



HIGH VOLTAGE



TO REVERSE ROTATION FOR EITHER VOLTAGE, INTERCHANGE ANY 2 LINE LEADS

- 形位公差
- 平面度
- 直线度
- ∠ 倾斜度
- ⊥ 垂直度
- // 平行度
- 圆度
- ⊘ 圆柱度
- ⌒ 面轮廓度
- ⌒ 线轮廓度
- ↗ 圆跳动
- ⊕ 位置度
- ◎ 同轴度
- ≡ 对称度

除另有注明  
尺寸公差如下：  
 英寸 X XX XXX XXXX  
 毫米 ±.1 ±.02 ±.005 ±.0005  
 英寸 ±.1 ±.02 ±.005 ±.0005  
 毫米 ±0.5 ±0.13 ±0.013  
 角度 ±.50 度  
 清理毛刺和尖棱  
 英寸 .003-.015 毫米 0.1-0.4  
 内圆角  
 英寸 .020 毫米 0.5  
 表面粗糙度  
 英制 125 米制 3.2  
 米制尺寸显示在 [ ]

绘图:	R.RASCON	10-12-2010
批准:	D.JUAREZ	10-12-2010
第三角投影		图纸格式发布日期 02-22-2008 图纸格式版本 F
机密：本图纸及相关信息所有权归A. O. SMITH公司所有。 未经A. O. SMITH公司书面授权，不得泄露、复制、传播或作其他用途。--版权所有		
ASME Y14.5M 1994		



名称		CONN DIAGRAM-NAMEPLATE	
图幅	B	图号	D0000283-001
比例	NONE	页号	1

4

3

2

1



\*\* Subject to change without notice.



**MARATHON ELECTRIC CORPORATION**  
TYPICAL PERFORMANCE CURVE for AC MOTOR

Customer

Curve at 460 Volts  
60 HZ  
0.33 HP

HP 0.33&0.33 PHASE 3

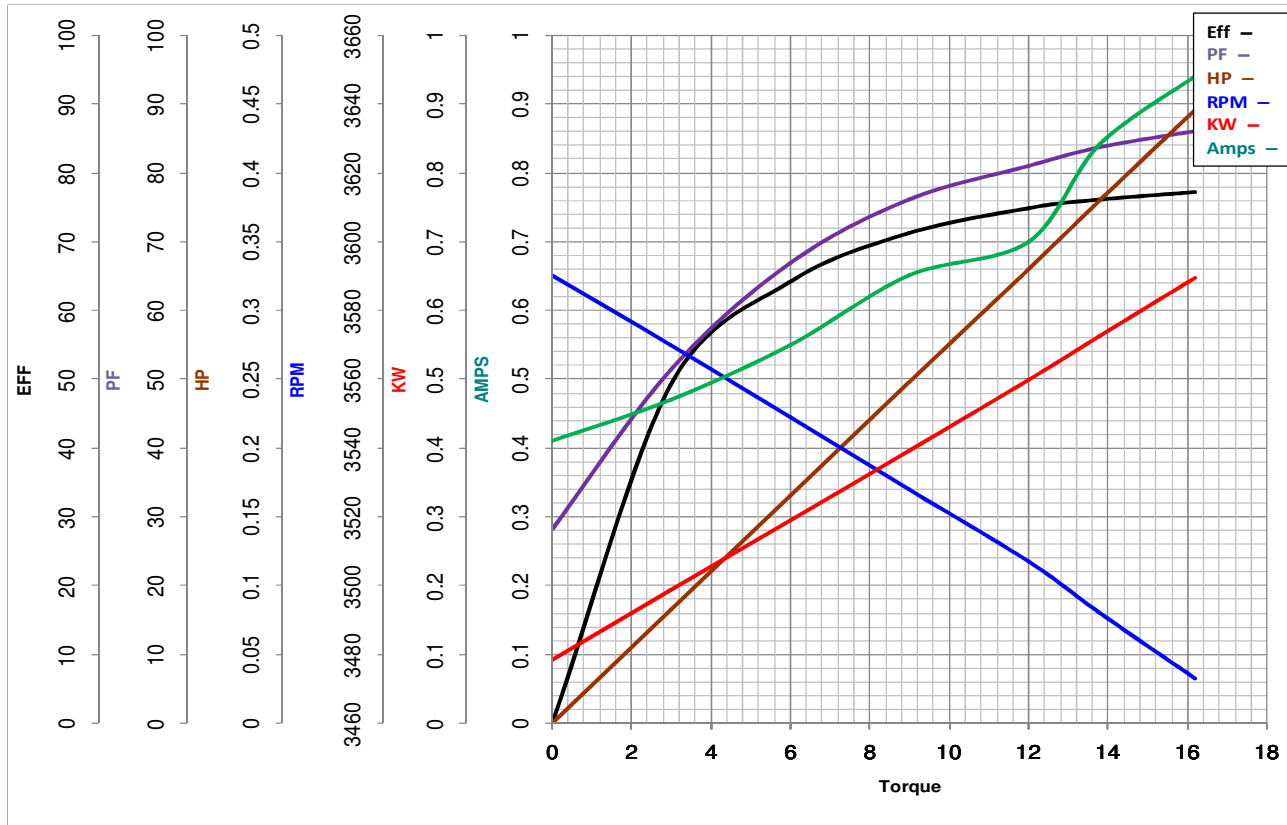
Model No 48T34D11001

VOLTS 230/460&190/380

Catalog No K113A

HZ 60&50

RPM 3450&2850



Torque in Oz.Ft

FL TORQUE 12 Oz.Ft  
BD TORQUE 59.9 Oz.Ft  
LR TORQUE 48 Oz.Ft

FL AMPS 1.4/0.7  
PU TORQUE 45.8 Oz.Ft  
LR AMPS 6.7

WINDING 2501315-007-3

Date 1/21/2019